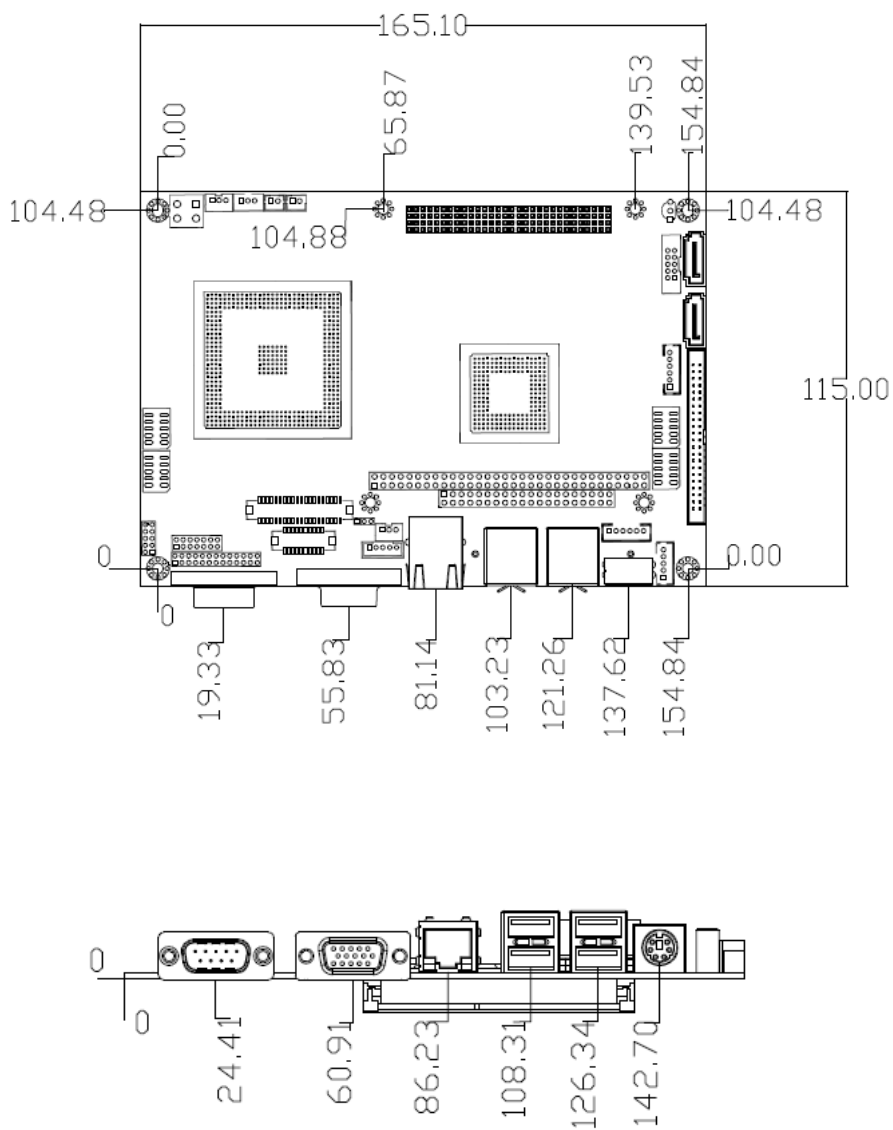


Dimension



**EPIC SBC with AMD® LX800 CPU, Audio, VGA/ LVDS,
SATA and RAID 0, 1, JBOD Function Support**

NANO-LX-800

Quick Installation Guide

Version 1.1

Apr.10, 2007

Package Contents

NANO-LX-800 package includes the following items:

- 1 x NANO-LX Single Board Computer
- 1 x IDE Flat Cable 44p/44p
- 1 x Audio Cable
- 2 x SATA Cable
- 1 x SATA Power Cable
- 1 x Power Cable
- 2 x 2.0 Pitch RS-232 Port Cable
- 1 x Keyboard/ PS2 Mouse Cable
- 1 x Mini Jumper Pack
- 1 x Utility CD
- 1 x QIG (Quick Installation Guide)

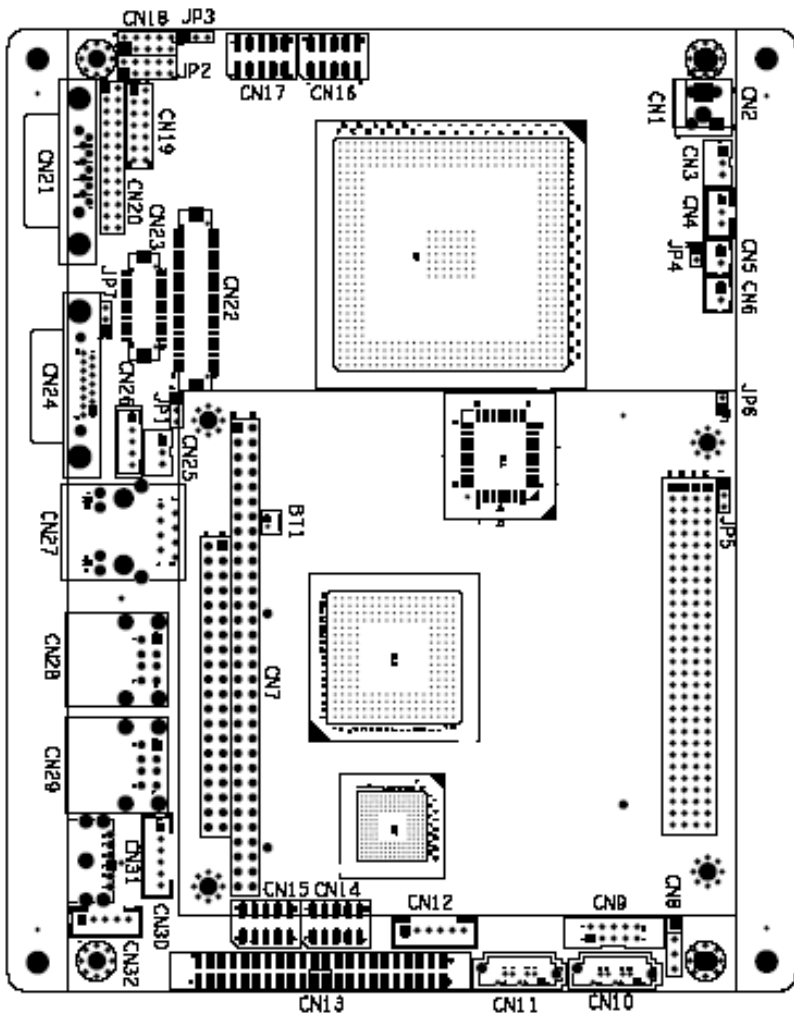


©2007 Copyright by IEI Technology corp.
All rights reserved.

Specifications

- CPU: AMD® Geode LX-800 500 MHz processor
- System Chipset: AMD® Geode LX800 + AMD® CS5536
- BIOS: AWARD
- System memory: 1 x 200-pin DDR 333/400MHz SO-DIMM SDRAM up to 1GB
- Ethernet: 10/100Base-T RTL8100C
- I/O
 - I/O Interface:
 - 4 x USB 2.0
 - 2 x SATA-150
 - 1 x CFII
 - 1 x LPT
 - 6 x RS-232
 - 1 x RS-422/485
 - 1 x PS/2 keyboard/mouse
 - 1 x IDE
 - Supper I/O: W83627EHG
 - Audio: AC'97 Codec Realtek ALC202A
 - Display:
 - VGA integrated in AMD® LX800
 - 24-bit single channel TTL
 - 18-bit single channel LVDS
 - Watchdog timer:
 - Software programmable supports 1~255 sec. system reset
 - Power Supply: 12V only, AT/ATX power support
 - Power Consumption:
 - +12V@0.92A (AMD LX 800 with DDR400 256MB RAM)
 - Temperature: 0 ~ 60°C(32 ~ 140°F)
 - Humidity: Operation: 5% ~ 95%
 - Dimension: 115mm x 165mm;Weight: GW:0.95Kg; NW: 0.35Kg

Layout



CN22:TFT TTL LCD			
PIN	Description	PIN	Description
2	VCC5	1	VCC5
4	GROUND	3	GROUND
6	VCC3	5	VCC3
8	GROUND	7	NC
10	FPD1	9	FPD0
12	FPD3	11	FPD2
14	FPD5	13	FPD4
16	FPD7	15	FPD6
18	FPD9	17	FPD8
20	FPD11	19	FPD10
22	FPD13	21	FPD12
24	FPD15	23	FPD14
26	FPD17	25	FPD116
28	FPD19	27	FPD18
30	FPD21	29	FPD20
32	FPD23	31	FPD22
34	GROUND	33	GROUND
36	FPVS	35	FPCLK
38	FPHS	37	FPDE
40	FPENVEE	39	NC

CN25:POWER INPUT	
PIN	Description
1	-VCC5
2	GROUND
3	-VCC12

CN26:Invertor Connector	
PIN	DESCRIPTION
1	BL_ADJ
2	GROUND
3	VCC12
4	GROUND
5	VDD_EN

CN30:KB/MS Connector	
PIN	Description
1	VCC5
2	Mouse DATA
3	Mouse Clock
4	Keyboard DATA
5	Keyboard Clock
6	GROUND

CN32:IrDA connector	
PIN	DESCRIPTION
1	VCC5
2	NC
3	IR-RX
4	GROUND
5	IR-TX

Jumpers

JP1 LCD PANNEL SHIFT CLOCK

JP1	Description
1-2	Inverted output
2-3	Normal output

JP2 : COM-1 , COM-2 RI Pin and Voltage selection (Optional)

	Description
1-3	COM-1 RI Pin use +12V
3-5	COM-1 RI Pin use +5V
7-9	COM-1 RI Pin use RI
2-4	COM-2 RI Pin use +12V
4-6	COM-2 RI Pin use +5V
8-10	COM-2 RI-Pin- useRI

JP3: COM3 RS422/RS485 Select

JP3	Description
1-2	UART-2 RxD Signal connect to RS-422
2-3	UART-2 RxD Signal connect to RS-485

JP4 : AT/ATX Power Mode select

JP4	Description
Short	AT Mode
Open	ATX Mode

JP5 : PC104 Plus VIO Voltage select jumper

	DESCRIPTION
1-2	5V
2-3	3.3V

JP6 : SERIRQ Select

	DESCRIPTION
Short	SERIRQ Enable
Open	SERIRQ Disable

Note: Serial IRQ can only work properly if PCMCIA supports Serial IRQ signal

JP7 : LCD Panel (LVDS/TTL)Voltage select

	DESCRIPTION
1-2	3.3V
2-3	5V

Note :

For NANO-LX-800-R10 (previous version),
the JP7 pin 1-2 set as 5V, pin 2-3 set as 3.3V

CN1:Power Connector Optional	
PIN	Description
1	Power IN (+12V)
2	GROUND

CN3:ATX Connector	
PIN	DESCRIPTION
1	5VSB
2	GROUND
3	PS_ON

CN2:Power Connector (Default)			
PIN	DESCRIPTION	PIN	DESCRIPTION
1	GROUND	2	Power IN (+12V)
3	GROUND	4	Power IN (+12V)

CN4:FAN Connector	
PIN	Description
1	Rotation Signal
2	VCC5
3	GROUND

CN5:ATX Power button	
PIN	DESCRIPTION
1	ATX Power button+
2	ATX Power button-

CN6:Rest Button	
PIN	DESCRIPTION
1	Rest button+
2	Rest button-

CN8:AudioCD-IN Connector	
PIN	DESCRIPTION
1	CD_L
2	GROUND
3	GROUND
4	CD_R

CN9:Audio Connector			
PIN NO.	DESCRIPTION	PIN NO.	DESCRIPTION
1	LINE_OUT_R	2	LINE_IN_R
3	GROUND	4	GROUND
5	LINE_OUT_LR	6	LINE_IN_L
7	GROUND	8	GROUND
9	MIC1	10	MIC2

CN19:COM2			
PIN NO.	DESCRIPTION	PIN NO.	DESCRIPTION
1	DCD	2	DSR
3	RXD	4	RTS
5	TXD	6	CTS
7	DTR	8	RI
9	GND	10	GND
11	TXD485+	12	TXD485#
13	RXD485+	14	RXD485#

CN14:COM3,CN15:COM4,CN16:COM6, CN17:COM5			
PIN NO.	DESCRIPTION	PIN NO.	DESCRIPTION
1	DCD	6	DSR
2	RXD	7	RTS
3	TXD	8	CTS
4	DTR	9	RI
5	GND	10	GND

CN18:Digital I/O Connector			
PIN NO.	DESCRIPTION	PIN NO.	DESCRIPTION
1	GND	2	VCC5
3	OUT0	4	OUT1
5	OUT2	6	OUT3
7	IN0	8	IN1
9	IN2	10	IN3

CN23:LVDS LCD Panel Connector			
PIN	Description	PIN	Description
2	GROUND	1	GROUND
4	LVDS_Y0-	3	LVDS_Y0+
6	LVDS_Y1+	5	LVDS_Y1+
8	LVDS_Y2-	7	LVDS_Y2+
10	LVDS_CLK-	9	LVDS_CLK+
12	NC	11	NC
14	GROUND	13	GROUND
16	NC	15	NC
18	VCC5_LVDS	17	VCC5_LVDS
20	VCC3_LVDS	19	VCC3_LVDS